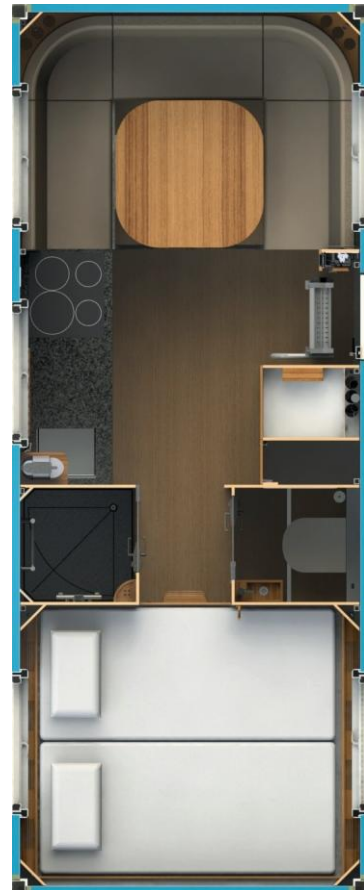


Bliss Mobil
Standard models



18' Bliss Mobil



20' Bliss Mobil



23' Bliss Mobil

Bliss Mobil
Long bed model



18' Bliss Mobil

Bliss Mobil
Four bed model



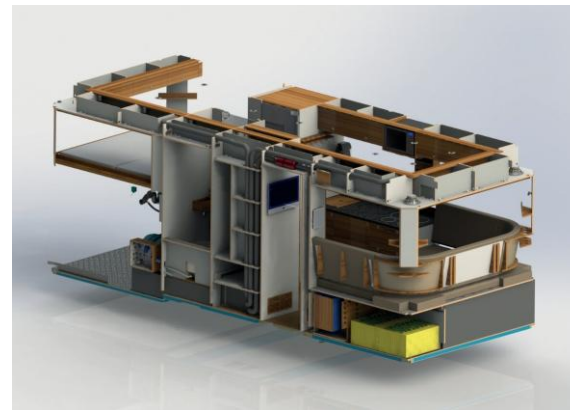
20' Bliss Mobil

Bliss Mobil 3D view

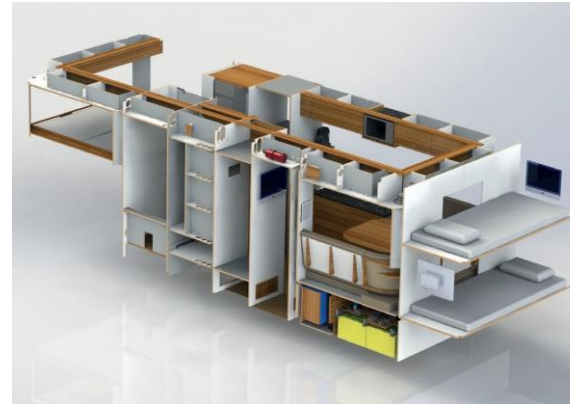
Standard models



18' Bliss Mobil

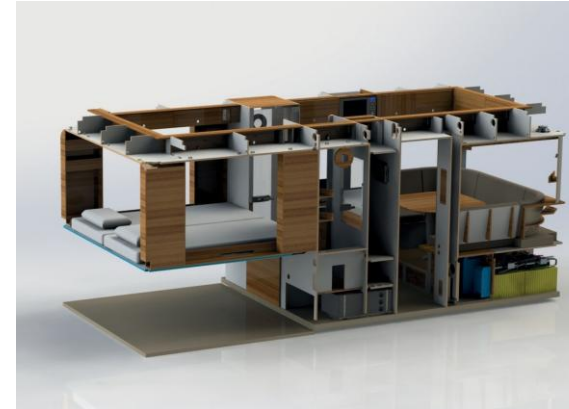


20' Bliss Mobil



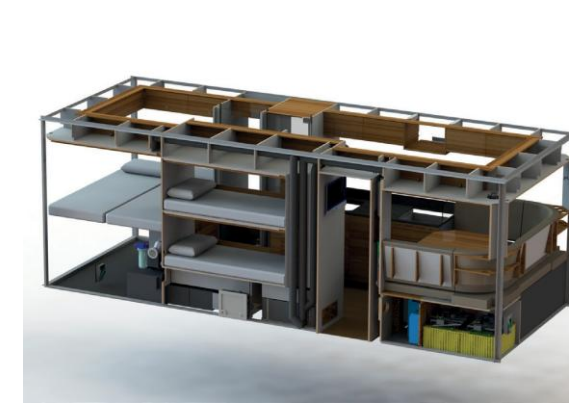
23' Bliss Mobil

Long bed models



18' Bliss Mobil

Four bed model



20' Bliss Mobil



blissmobil.com

facebook.com/blissmobil





18' Body Bliss Mobil

| | Standard | Long bed |
|--------------------------------------|---------------------------------------|------------------------------|
| Price (excl. VAT, ex works Breda-NL) | € 220.000,- | € 240.000,- |
| Unit Dimensions | | |
| Outside dimensions (L x W x H) | 215.4 x 96 x 94.5 inches | |
| Inside dimensions (L x W x H) | 210.6 x 91.2 x 82.7 inches | |
| Volume (gross) | 918.2 ft ³ | |
| Unit | | |
| Wall thickness/insulation | 2.4 inches, 0.396 K.m ² /W | |
| Roof hatch large (L x W) | (2x) 25.2 x 15.4 inches | |
| Roof hatch small (L x W) | - | |
| Windows large (W x H) | (2x) 39.4 x 23.6 inches | |
| Windows small (W x H) | (3x) 32.3 x 19.7 inches | |
| Side hatches (W x H) | (2x) 38.6 x 23.2 inches | - |
| Steel doors at the back | - | yes, hold two tyres |
| Garage/storage | 108.4 ft ³ (rear) | 189.6 ft ³ (rear) |
| Optional Alcove storage | - | |
| Sunscreen (L x W) | 137.8 x 116.1 inches | |
| Exhaust fans (automatic shutters) | 6x | 7x |
| Solar powered roof fans | 2x | |
| Interior | | |
| Beds (L x W) | 2x 78.7 x 31.5 inches | 2x 78.7 x 35.4 inches |
| Couch bed (L x W) | 2x 82.7 x 31.5 inches | |
| U-shape couch | seats 6 people | |
| Corian kitchen worktop (L x W) | 63 x 24.5 inches | 39.8 x 24.5 inches |
| Water Circuit | | |
| Fresh Water tank | 149 gallons | |
| Grey Water tank | 63 gallons | |
| Black Water tank | 34 gallons | 30 gallons |
| Hot water boiler | 8 gallons, 0.75kW | |
| Silent Fresh Water pump | (1x) 3 gal/min 2.1Bar | |
| Water filters | sediment, UV, carbon | |
| Rainwater collection on the roof | optional | |
| Water maker | optional | |
| Toilet | ceramic water toilet | |
| Cabinets and sink in toilet | - | |
| Medicine cabinet toilet | optional | |
| Shower | 30.9 x 23.6 x 79.1 inches | 30.9 x 25.8 x 79.1 inches |
| Shower separated from toilet | yes | |
| Outside water in/out connection | yes | |
| Electrical Circuit | | |
| Lithium-ion battery bank(s) | 2 parallel banks, 24V | |
| Total usable battery capacity | >20 kWh - 800 Ah | |
| Battery Management System | 2 BMS control units | |
| Solar panels large | 1x 0.3kW | |
| Solar panels medium | 4x 0.24kW (2 parallel sets) | |
| Max. solar power | 1.3 kW | |
| MPPT solar controller | 1x 150/35A + 1x 100/15A | |
| Outside 230V in/out | yes | |
| Charge rate (max.) | 28V, 120A | |
| NATO-plug connection | yes | |
| Connections | WiFi (WAN), 3G, GPS | |
| Electric towel heater 24V | yes | |
| Power outlets | 230V, 12V, USB | |
| LED Lighting | 11x spots + indirect LED | |
| Climate control | | |
| Air conditioning cooling cap. | 2.5kW, 8500 Btu/h | |
| Air condition heating cap. | 3kW, 10,000 Btu/h | |
| Floor heating (electrical) | 0.45kW | 0.6kW |
| Frost protection (electrical) | 0.4kW | |
| Diesel Air Heater capacity | 0.9 - 2.0 kW | |
| Temp. sensitive ventilators | 4x | |
| Appliances | | |
| Microwave/Oven | Microwave / Oven / Grill | |
| Induction stove | 4 hot plates | 2 hot plates |
| Extractor hood | yes, carbon filter | |
| Fridge | 34 gallons | 23 gallons |
| Fridge freezer compartment | 1.5 gallons | |
| Freezer | 17 gallons | |
| Washing machine | optional | |
| Vacuum cleaner (build-in) | optional | |
| Audio Visual | | |
| Lenovo 22-inch computer/monitor | optional – Apple supplement | |
| Stereo speakers | 2x inside, 2x outside | |
| Security | | |
| Entrance Door | 3-point lock system | |
| Smoke detectors | 2x | |
| Fire extinguisher | 1x | |



20' Body Bliss Mobil

| | Standard | Long bed | Four bed |
|--------------------------------------|---------------------------------------|------------------------------|------------------------------|
| Price (excl. VAT, ex works Breda-NL) | € 270.000,- | € 275.000,- | € 280.000,- |
| Unit Dimensions | | | |
| Outside dimensions (L x W x H) | 238.6 x 96 x 94.5 inches | | |
| Inside dimensions (L x W x H) | 233.8 x 91.3 x 82.7 inches | | |
| Volume (gross) | 1020.6 ft ³ | | |
| Unit | | | |
| Wall thickness/insulation | 2.4 inches, 0.396 K.m ² /W | | |
| Roof hatch large (L x W) | (2x) 25.2 x 15.4 inches | | |
| Roof hatch small (L x W) | - | | |
| Windows large (W x H) | (5x) 39.4 x 23.6 inches | | |
| Windows small (W x H) | - | | |
| Side hatches (W x H) | - | | |
| Steel doors at the back | yes, hold two tyres | | |
| Garage/storage | 189.6 ft ³ (rear) | 205.5 ft ³ (rear) | 108.4 ft ³ (rear) |
| Optional Alcove storage | - | | |
| Sunscreen (L x W) | 137.8 x 116.1 inches | | |
| Exhaust fans (automatic shutters) | 7x | 7x | 6x |
| Solar powered roof fans | 2x | | |
| Interior | | | |
| Beds (L x W) | 2x 78.7 x 35.4 inches | - | 2x 78.7 x 31.5 inches |
| Couch bed (L x W) | 2x 82.7 x 31.5 inches | | |
| U-shape couch | seats 6 people | | |
| Corian kitchen worktop (L x W) | 63 x 24.5 inches | | |
| Water Circuit | | | |
| Fresh Water tank | 149 gallons | | |
| Grey Water tank | 63 gallons | | |
| Black Water tank | 34 gallons | | |
| Hot water boiler | 10.5 gallons, 0.75kW | | |
| Silent Fresh Water pump | (2x) 3 gal/min 2.1Bar | | |
| Water filters | sediment, UV, carbon | | |
| Rainwater collection on the roof | optional | | |
| Water maker | optional | | |
| Toilet | ceramic water toilet | | |
| Cabinets and sink in toilet | yes | | |
| Medicine cabinet toilet | yes | | |
| Shower | 30.5 x 30.9 x 79.1 inches | 23.6 30.9 x 79.1 inches | 23.6 x 30.9 x 78.7 inches |
| Shower separated from toilet | yes | | |
| Outside water in/out connection | yes | | |
| Electrical Circuit | | | |
| Lithium-ion battery bank(s) | 2 parallel banks, 24V | | |
| Total usable battery capacity | >20 kWh - 800 Ah | | |
| Battery Management System | 2 BMS control units | | |
| Solar panels large | 4x 0.3kW (2 parallel sets) | | |
| Solar panels medium | 2x 0.24kW (1 parallel set) | | |
| Max. solar power | 1.6 kW | | |
| MPPT solar controller | 1x 150/45A + 1x 150/35A | | |
| Outside 230V in/out | yes | | |
| Charge rate (max.) | 28V, 120A | | |
| NATO-plug connection | yes | | |
| Connections | WiFi (WAN), 3G, GPS | | |
| Electric towel heater 24V | yes | | |
| Power outlets | 230V, 12V, USB | | |
| LED Lighting | 13x spots + indirect LED | | |
| Climate control | | | |
| Air conditioning cooling cap. | 2.5kW, 8500 Btu/h | | |
| Air condition heating cap. | 3kW, 10,000 Btu/h | | |
| Floor heating (electrical) | 0.6kW | 0.6kW | 0.6kW |
| Frost protection (electrical) | 0.4kW | | |
| Diesel Air Heater capacity | 0.9 - 2.0 kW | | |
| Temp. sensitive ventilators | 4x | | |
| Appliances | | | |
| Microwave/Oven | Microwave / Oven / Grill | | |
| Induction stove | 4 hot plates | | |
| Extractor hood | yes, carbon filter | | |
| Fridge | 34 gallons | | |
| Fridge freezer compartment | 1.5 gallons | | |
| Freezer | 23 gallons | | |
| Washing machine | yes | | |
| Vacuum cleaner (build-in) | yes | | |
| Audio Visual | | | |
| Lenovo 22-inch computer/monitor | Yes – Apple supplement | | |
| Stereo speakers | 2x inside, 2x outside | | |
| Security | | | |
| Entrance Door | 3-point lock system | | |
| Smoke detectors | 2x | | |
| Fire extinguisher | 1x | | |



23' Body Bliss Mobil

| | Standard |
|--------------------------------------|---|
| Price (excl. VAT, ex works Breda-NL) | € 320.000,- |
| Unit Dimensions | |
| Outside dimensions (L x W x H) | 276 x 96 x 94.5 inches |
| Inside dimensions (L x W x H) | 271.3 x 91.3 x 82.7 inches |
| Volume (gross) | 1183 ft ³ |
| Unit | |
| Wall thickness/insulation | 2.4 inches, 0.396 K.m ² /W |
| Roof hatch large (L x W) | (2x) 25.2 x 15.4 inches |
| Roof hatch small (L x W) | - |
| Windows large (W x H) | (5x) 39.4 x 23.6 inches |
| Windows small (W x H) | (2x) 32.3 x 19.7 inches |
| Side hatches (W x H) | - |
| Steel doors at the back | yes, hold two tyres |
| Garage/storage | 189.6 ft ³ (rear) + 30.7 ft ³ |
| Optional Alcove storage | - |
| Sunscreen (L x W) | 137.8 x 116.1 inches |
| Exhaust fans (automatic shutters) | 7x |
| Solar powered roof fans | 2x |
| Interior | |
| Beds (L x W) | 2x 78.7 x 35.4 inches |
| Couch bed (L x W) | 2x 78.7 x 31.5 inches (bunk bed) |
| U-shape couch | seats 6 people |
| Corian kitchen worktop (L x W) | 63 x 24.5 inches |
| Water Circuit | |
| Fresh Water tank | 149 gallons |
| Grey Water tank | 63 gallons |
| Black Water tank | 34 gallons |
| Hot water boiler | 10.5 gallons, 0.75kW |
| Silent Fresh Water pump | (2x) 3 gal/min 2.1Bar |
| Water filters | sediment, UV, carbon |
| Rainwater collection on the roof | optional |
| Water maker | optional |
| Toilet | ceramic water toilet |
| Cabinets and sink in toilet | yes |
| Medicine cabinet toilet | yes |
| Shower | 30.3 x 30.3 x 79.1 inches |
| Shower separated from toilet | yes |
| Outside water in/out connection | yes |
| Electrical Circuit | |
| Lithium-ion battery bank(s) | 3 parallel banks, 24V |
| Total usable battery capacity | 33 kW - 1.200 Ah |
| Battery Management System | 3 BMS control units |
| Solar panels large | 4x 0.3kW (2 parallel sets) |
| Solar panels medium | 3x 0.24kW |
| Max. solar power | 3.9 kW |
| MPPT solar controller | 1x 150/45A + 1x 100/30A |
| Outside 230V in/out | yes |
| Charge rate (max.) | 28V, 120A |
| NATO-plug connection | yes |
| Connections | WiFi (WAN), 3G, GPS |
| Electric towel heater 24V | yes |
| Power outlets | 230V, 12V, USB |
| LED Lighting | 14x spots + indirect LED |
| Climate control | |
| Air conditioning cooling cap. | 2.5kW, 8500 Btu/h |
| Air condition heating cap. | 3kW, 10,000 Btu/h |
| Floor heating (electrical) | 0.6kW |
| Frost protection (electrical) | 0.4kW |
| Diesel Air Heater capacity | 0.9 - 2.0 kW |
| Temp. sensitive ventilators | 4x |
| Appliances | |
| Microwave/Oven | Microwave / Oven / Grill |
| Induction stove | 4 hot plates |
| Extractor hood | yes, carbon filter |
| Fridge | 34 gallons |
| Fridge freezer compartment | 1.5 gallons |
| Freezer | 23 gallons |
| Washing machine | yes |
| Vacuum cleaner (build-in) | yes |
| Audio Visual | |
| Lenovo 22-inch computer/monitor | Yes – Apple supplement |
| Stereo speakers | 2x inside, 2x outside |
| Security | |
| Entrance Door | 3-point lock system |
| Smoke detectors | 2x |
| Fire extinguisher | 1x |