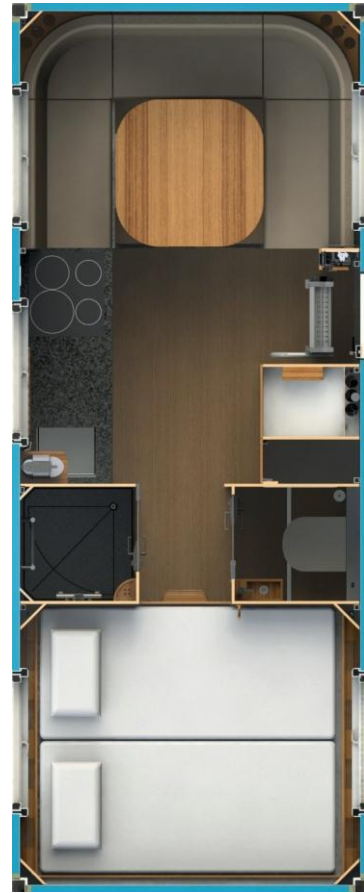


**Bliss Mobil**  
Standard models



18' Bliss Mobil



20' Bliss Mobil



23' Bliss Mobil

**Bliss Mobil**  
Long bed model



18' Bliss Mobil

**Bliss Mobil**  
Four bed model



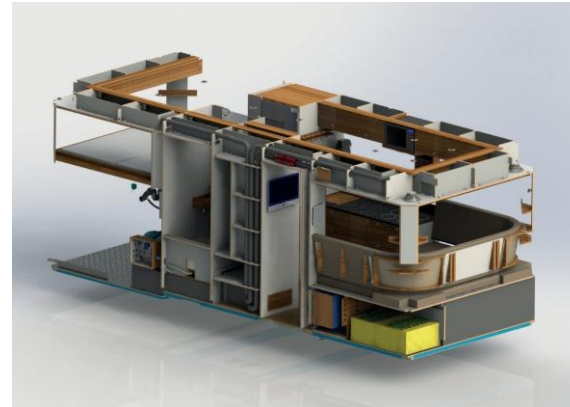
20' Bliss Mobil

**Bliss Mobil 3D view**

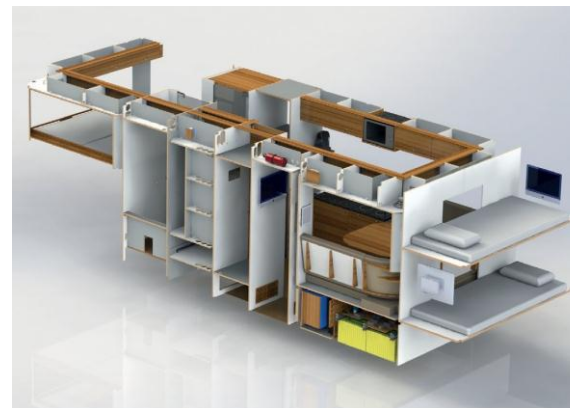
**Standard models**



18' Bliss Mobil

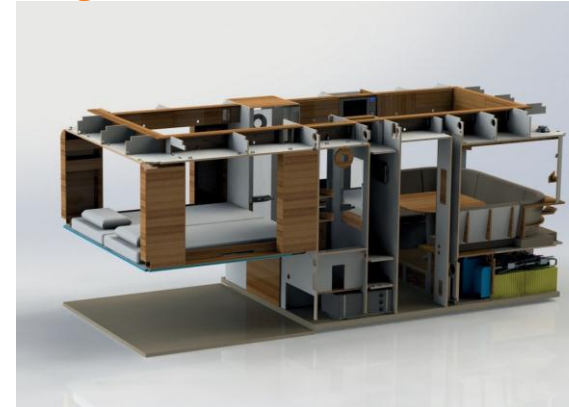


20' Bliss Mobil



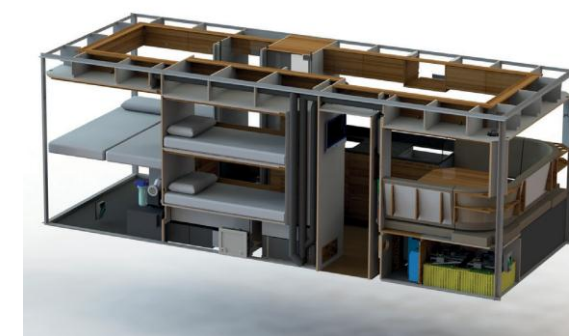
23' Bliss Mobil

**Long bed models**



18' Bliss Mobil

**Four bed model**



20' Bliss Mobil

**Specsheet**  
**18'-20'-23'**  
**Body Bliss Mobil**



[blissmobil.com](http://blissmobil.com)

[facebook.com/blissmobil](https://facebook.com/blissmobil)





## 18' Body Bliss Mobil

Standard

Long bed

Price (excl. VAT, ex works Breda-NL)	€ 220.000,-	€ 240.000,-
<b>Unit Dimensions</b>		
Outside dimensions (L x W x H)	5.470 x 2.438 x 2.400 mm	
Inside dimensions (L x W x H)	5.350 x 2.318 x 2.100 mm	
Volume (gross)	26,0 m <sup>3</sup>	
<b>Unit</b>		
Wall thickness/insulation	60 mm, 0,396 K.m <sup>2</sup> /W	
Roof hatch large (L x W)	(2x) 640 x 390 mm	
Roof hatch small (L x W)	-	
Windows large (W x H)	(2x) 1000 x 600 mm	
Windows small (W x H)	(3x) 820 x 500 mm	
Side hatches (W x H)	(2x) 980 x 590 mm	-
Steel doors at the back	-	yes, hold two tyres
Garage/storage	3,07 m <sup>3</sup> (rear)	5,37 m <sup>3</sup> (rear)
Optional Alcove storage	-	
Sunscreen (L x W)	3.500 x 2.950 mm	
Exhaust fans (automatic shutters)	6x	7x
Solar powered roof fans	2x	
<b>Interior</b>		
Beds (L x W)	2x 2.000 x 800 mm	2x 2.000 x 900 mm
Couch bed (L x W)	2x 2.100 x 800 mm	
U-shape couch	seats 6 people	
Corian kitchen worktop (L x W)	1.600 x 622 mm	1010 x 622 mm
<b>Water Circuit</b>		
Fresh Water tank	565 liter	
Grey Water tank	240 liter	
Black Water tank	130 liter	115 liter
Hot water boiler	30 liter, 0,75kW	
Silent Fresh Water pump	(1x) 11,3l/m 2,1Bar	
Water filters	sediment, UV, carbon	
Rainwater collection on the roof	optional	
Water maker	optional	
Toilet	ceramic water toilet	
Cabinets and sink in toilet	-	
Medicine cabinet toilet	optional	
Shower	785 x 600 x 2010 mm	785 x 655 x 2010 mm
Shower separated from toilet	yes	
Outside water in/out connection	yes	
<b>Electrical Circuit</b>		
Lithium-Ion battery bank(s)	2 parallel banks, 24V	
Total usable battery capacity	>20 kWh - 800 Ah	
Battery Management System	2 BMS control units	
Solar panels large	1x 0.3kW	
Solar panels medium	4x 0.24kW (2 parallel sets)	
Max. solar power	1,3 kW	
MPPT solar controller	1x 150/35A + 1x 100/15A	
Outside 230V in/out	yes	
Charge rate (max.)	28V, 120A	
NATO-plug connection	yes	
Connections	WiFi (WAN), 3G, GPS	
Electric towel heater 24V	yes	
Power outlets	230V, 12V, USB	
LED Lighting	11x spots + indirect LED	
<b>Climate control</b>		
Air conditioning cooling cap.	2,5kW, 8500 Btu/h	
Air condition heating cap.	3kW, 10.000 Btu/h	
Floor heating (electrical)	0,45kW	
Frost protection (electrical)	0,4kW	
Diesel Air Heater capacity	0,9 - 2,0 kW	
Temp. sensitive ventilators	4x	
<b>Appliances</b>		
Microwave/Oven	Microwave / Oven / Grill	
Induction stove	4 hot plates	2 hot plates
Extractor hood	yes, carbon filter	
Fridge	130 liter	
Fridge freezer compartment	6 liter	
Freezer	65 liter	
Washing machine	optional	
Vacuum cleaner (build-in)	optional	
<b>Audio Visual</b>		
Lenovo 22-inch computer/monitor	optional – Apple supplement	
Stereo speakers	2x inside, 2x outside	
<b>Security</b>		
Entrance Door	3-point lock system	
Smoke detectors	2x	
Fire extinguisher	1x	



## 20' Body Bliss Mobil

Standard

Long bed

Four bed

Price (excl. VAT, ex works Breda-NL)	€ 270.000,-	€ 275.000,-	€ 280.000,-
<b>Unit Dimensions</b>			
Outside dimensions (L x W x H)	6.059 x 2.438 x 2.400 mm		
Inside dimensions (L x W x H)	5.939 x 2.318 x 2.100 mm		
Volume (gross)	28,9 m <sup>3</sup>		
<b>Unit</b>			
Wall thickness/insulation	60 mm, 0,396 K.m <sup>2</sup> /W		
Roof hatch large (L x W)	(2x) 640 x 390 mm		
Roof hatch small (L x W)	-		
Windows large (W x H)	(5x) 1000 x 600 mm		
Windows small (W x H)	-		
Side hatches (W x H)	-	-	(2x) 980 x 590 mm
Steel doors at the back	yes, hold two tyres		
Garage/storage	5,37 m <sup>3</sup> (rear)	5,82 m <sup>3</sup> (rear)	3,07 m <sup>3</sup> (rear)
Optional Alcove storage	-		
Sunscreen (L x W)	3.500 x 2.950 mm		
Exhaust fans (automatic shutters)	7x	7x	6x
Solar powered roof fans	2x		
<b>Interior</b>			
Beds (L x W)	2x 2.000 x 900 mm		2x 2.000 x 800 mm
Couch bed (L x W)	2x 2.100 x 800 mm		
U-shape couch	seats 6 people		
Corian kitchen worktop (L x W)	1.600 x 622 mm		
<b>Water Circuit</b>			
Fresh Water tank	565 liter		
Grey Water tank	240 liter		
Black Water tank	130 liter		
Hot water boiler	40 liter, 0,75kW		
Silent Fresh Water pump	(2x) 11,3l/m 2,1Bar		
Water filters	sediment, UV, carbon		
Rainwater collection on the roof	optional		
Water maker	optional		
Toilet	ceramic water toilet		
Cabinets and sink in toilet	yes		
Medicine cabinet toilet	yes		
Shower	770 x 770 x 2.010 mm	770 x 620 x 2.010 mm	770 x 620 x 2.000 mm
Shower separated from toilet	yes		
Outside water in/out connection	yes		
<b>Electrical Circuit</b>			
Lithium-Ion battery bank(s)	2 parallel banks, 24V		
Total usable battery capacity	>20 kWh - 800 Ah		
Battery Management System	2 BMS control units		
Solar panels large	4x 0.3kW (2 parallel sets)		
Solar panels medium	2x 0.24kW (1 parallel set)		
Max. solar power	1,6 kW		
MPPT solar controller	1x 150/45A + 1x 100/35A		
Outside 230V in/out	yes		
Charge rate (max.)	28V, 120A		
NATO-plug connection	yes		
Connections	WiFi (WAN), 3G, GPS		
Electric towel heater 24V	yes		
Power outlets	230V, 12V, USB		
LED Lighting	13x spots + indirect LED		
<b>Climate control</b>			
Air conditioning cooling cap.	2,5kW, 8500 Btu/h		
Air condition heating cap.	3kW, 10.000 Btu/h		
Floor heating (electrical)	0,6kW	0,6kW	0,6kW
Frost protection (electrical)	0,4kW		
Diesel Air Heater capacity	0,9 - 2,0 kW		
Temp. sensitive ventilators	4x		
<b>Appliances</b>			
Microwave/Oven	Microwave / Oven / Grill		
Induction stove	4 hot plates		
Extractor hood	yes, carbon filter		
Fridge	130 liter		
Fridge freezer compartment	6 liter		
Freezer	90 liter		
Washing machine	yes		
Vacuum cleaner (build-in)	yes		
<b>Audio Visual</b>			
Lenovo 22-inch computer/monitor	Yes – Apple supplement		
Stereo speakers	2x inside, 2x outside		
<b>Security</b>			
Entrance Door	3-point lock system		
Smoke detectors	2x		
Fire extinguisher	1x		



## 23' Body Bliss Mobil

Standard

Price (excl. VAT, ex works Breda-NL)	€ 320.000,-		
<b>Unit Dimensions</b>			
Outside dimensions (L x W x H)	7.010 x 2.438 x 2.400 mm		
Inside dimensions (L x W x H)	6.890 x 2.318 x 2.100 mm		
Volume (gross)	33,5 m <sup>3</sup>		
<b>Unit</b>			
Wall thickness/insulation	60 mm, 0,396 K.m <sup>2</sup> /W		
Roof hatch large (L x W)	(2x) 640 x 390 mm		
Roof hatch small (L x W)	-		
Windows large (W x H)	(5x) 1000 x 600 mm		
Windows small (W x H)	(2x) 820 x 500 mm		
Side hatches (W x H)	-		
Steel doors at the back	yes, hold two tyres		
Garage/storage	5,37 m <sup>3</sup> (rear) + 0,87 m <sup>3</sup> (front)		
Optional Alcove storage	-		
Sunscreen (L x W)	3.500 x 2.950 mm		
Exhaust fans (automatic shutters)	7x		
Solar powered roof fans	2x		
<b>Interior</b>			
Beds (L x W)	2x 2.000 x 900 mm		
Couch bed (L x W)	2x 2.100 x 800 mm		
U-shape couch	seats 6 people		
Corian kitchen worktop (L x W)	1.600 x 622 mm		
<b>Water Circuit</b>			
Fresh Water tank	565 liter		
Grey Water tank	240 liter		
Black Water tank	130 liter		
Hot water boiler	40 liter, 0,75kW		
Silent Fresh Water pump	(2x) 11,3l/m 2,1Bar		
Water filters	sediment, UV, carbon		
Rainwater collection on the roof	optional		
Water maker	optional		
Toilet	ceramic water toilet		
Cabinets and sink in toilet	yes		
Medicine cabinet toilet	yes		
Shower	770 x 770 x 2.010 mm		
Shower separated from toilet	yes		
Outside water in/out connection	yes		
<b>Electrical Circuit</b>			
Lithium-Ion battery bank(s)	3 parallel banks, 24V		
Total usable battery capacity	33 kW - 1.200 Ah		
Battery Management System	3 BMS control units		
Solar panels large	4x 0.3kW (2 parallel sets )		
Solar panels medium	3x 0.24kW		
Max. solar power	1,9 kW		
MPPT solar controller	1x 150/45A + 1x 100/30A		
Outside 230V in/out	yes		
Charge rate (max.)	28V, 120A		
NATO-plug connection	yes		
Connections	WiFi (WAN), 3G, GPS		
Electric towel heater 24V	yes		
Power outlets	230V, 12V, USB		
LED Lighting	14x spots + indirect LED		
<b>Climate control</b>			
Air conditioning cooling cap.	2,5kW, 8500 Btu/h		
Air condition heating cap.	3kW, 10.000 Btu/h		
Floor heating (electrical)	0,6kW		
Frost protection (electrical)	0,4kW		
Diesel Air Heater capacity	0,9 - 2,0 kW		
Temp. sensitive ventilators	4x		
<b>Appliances</b>			
Microwave/Oven	Microwave / Oven / Grill		
Induction stove	4 hot plates		
Extractor hood	yes, carbon filter		
Fridge	130 liter		
Fridge freezer compartment	6 liter		
Freezer	90 liter		
Washing machine	yes		
Vacuum cleaner (build-in)	yes		
<b>Audio Visual</b>			
Lenovo 22-inch computer/monitor	Yes – Apple supplement		
Stereo speakers	2x inside, 2x outside		
<b>Security</b>			
Entrance Door	3-point lock system		
Smoke detectors	2x		
Fire extinguisher	1x		